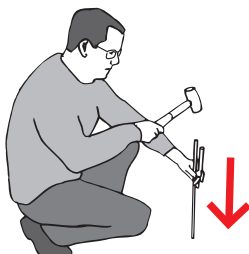


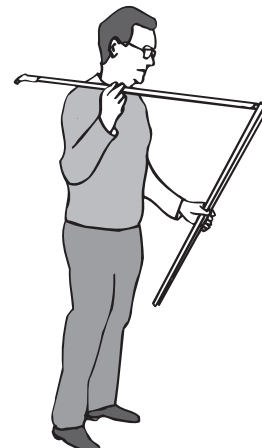
# Expand FlagStand 1 Set-up Instruction (Ground Stake - All Sizes)



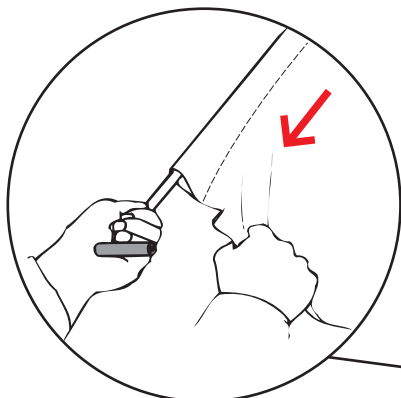
1. Open the carry bag and remove the ground stake



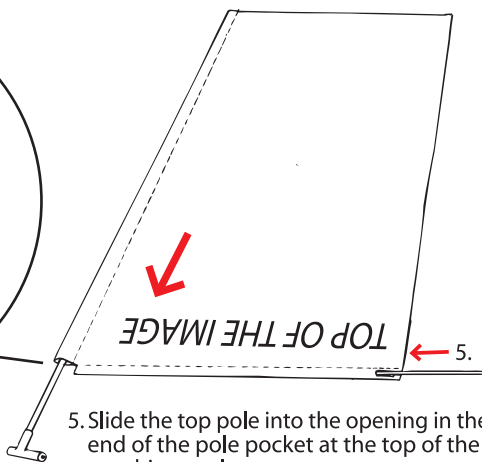
2. Hammer in the ground stake into a soft surface such as snow or soil



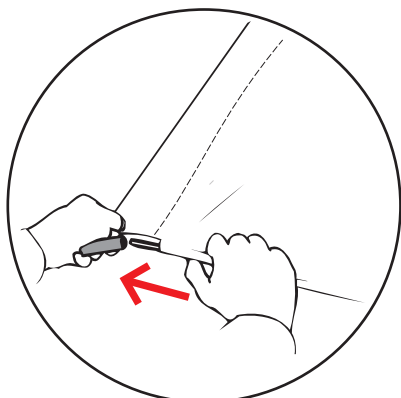
3. Unfold the vertical pole and align the green arrows



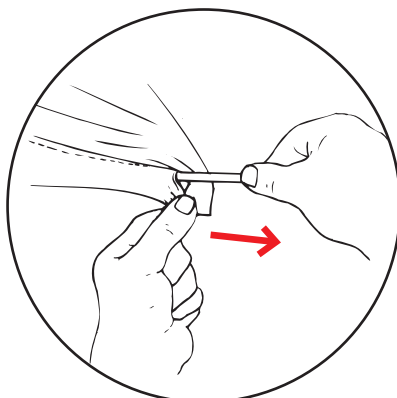
4. Slide the graphic up the vertical pole from the bottom



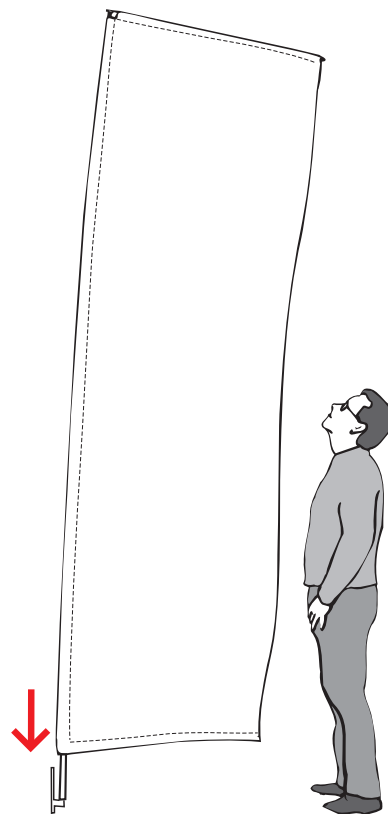
5. Slide the top pole into the opening in the end of the pole pocket at the top of the graphic panel.



6. Slide the top pole through the pole pocket and into the top connector



7. Pull the graphic over the end of the pole.



8. Slide the vertical pole onto the ground stake and you are finished!