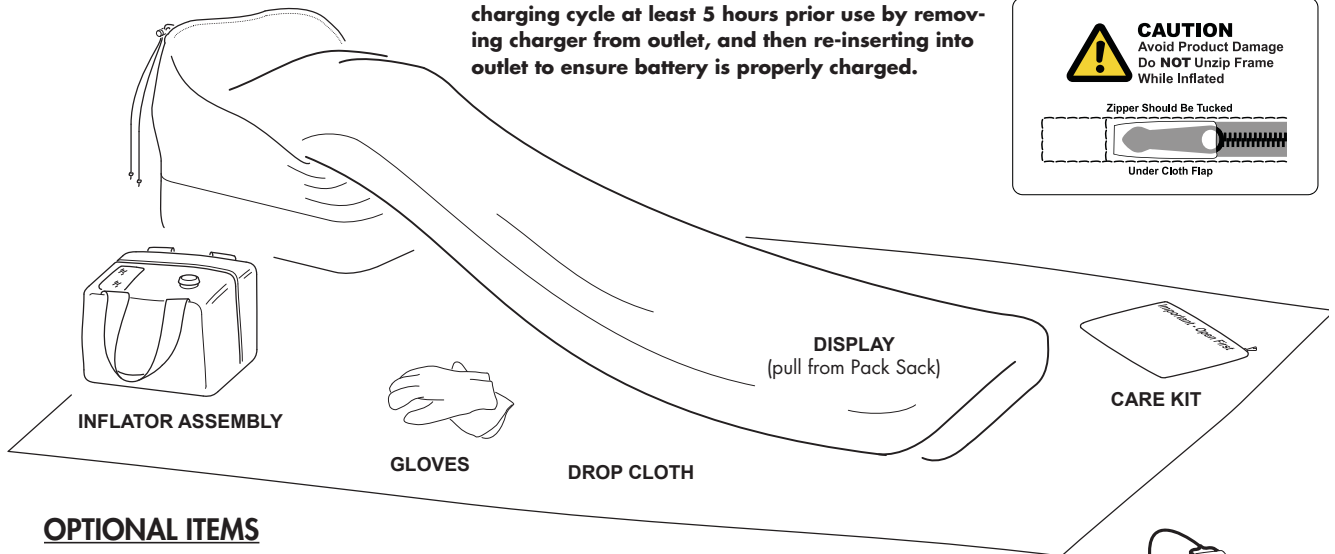
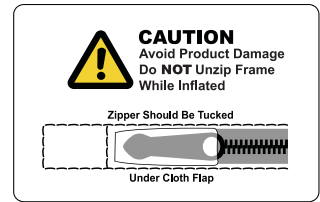


# Skyline WindScape® Exhibit System

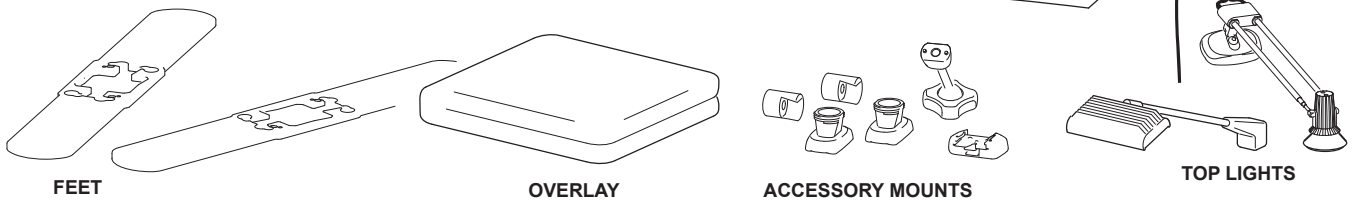
## INSTRUCTIONS

### UNPACK

**Important:** Always store battery on charger when not in use. After long periods of storage, restart charging cycle at least 5 hours prior use by removing charger from outlet, and then re-inserting into outlet to ensure battery is properly charged.

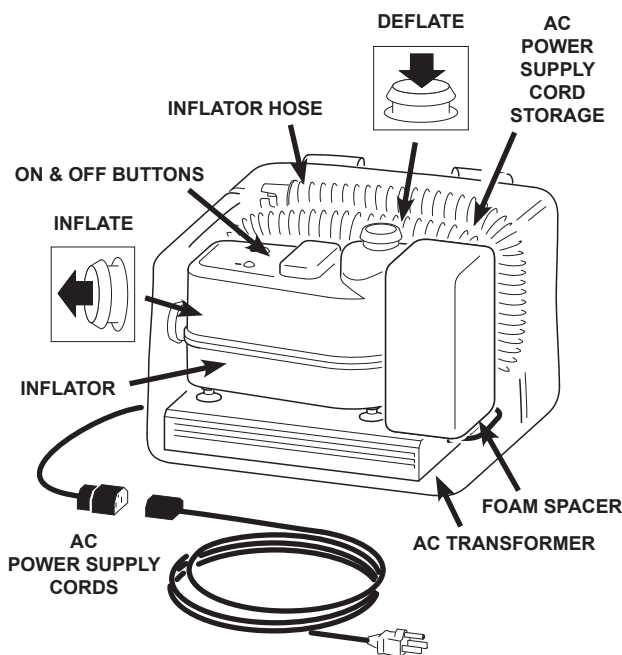


### OPTIONAL ITEMS

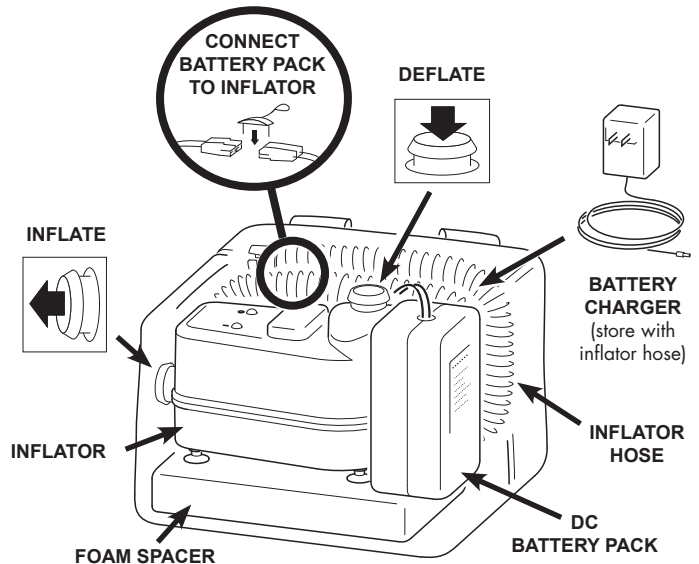


## INFLATOR ASSEMBLIES (AC or DC Options)

### AC INFLATOR PACK



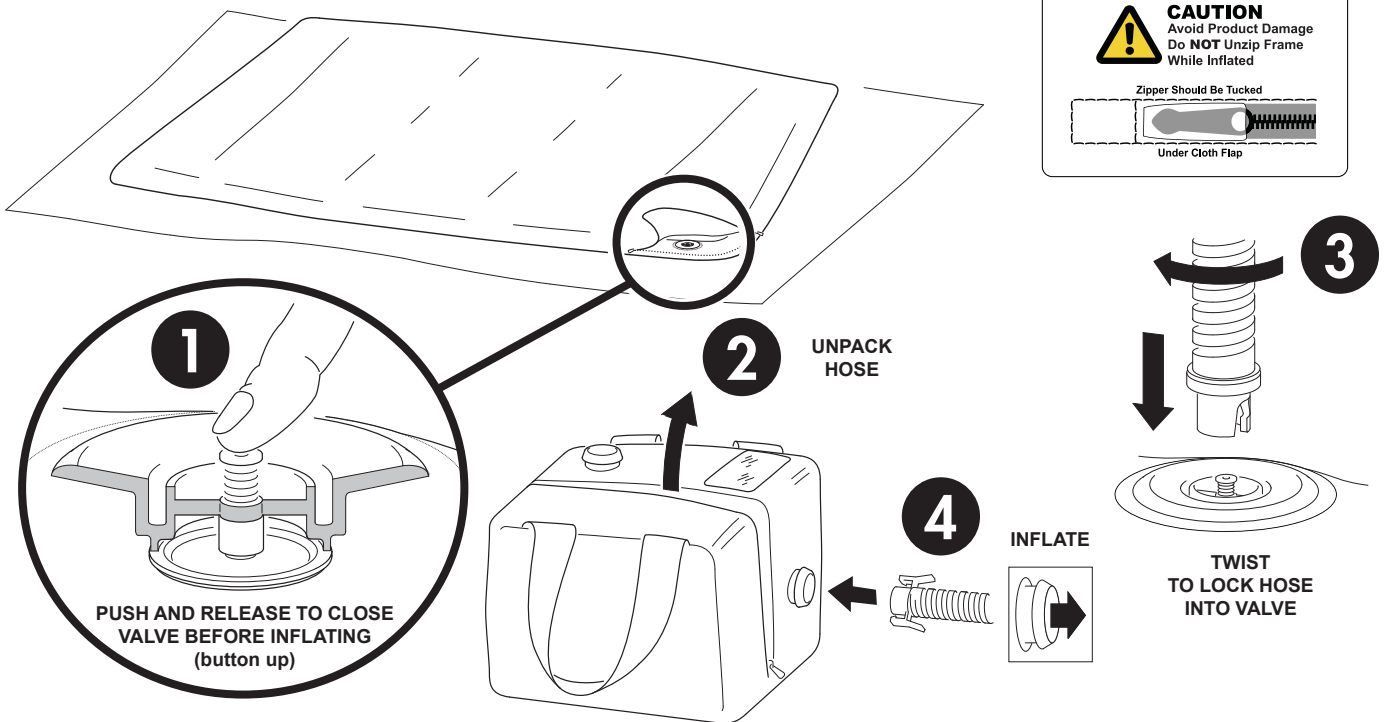
### DC BATTERY INFLATOR PACK



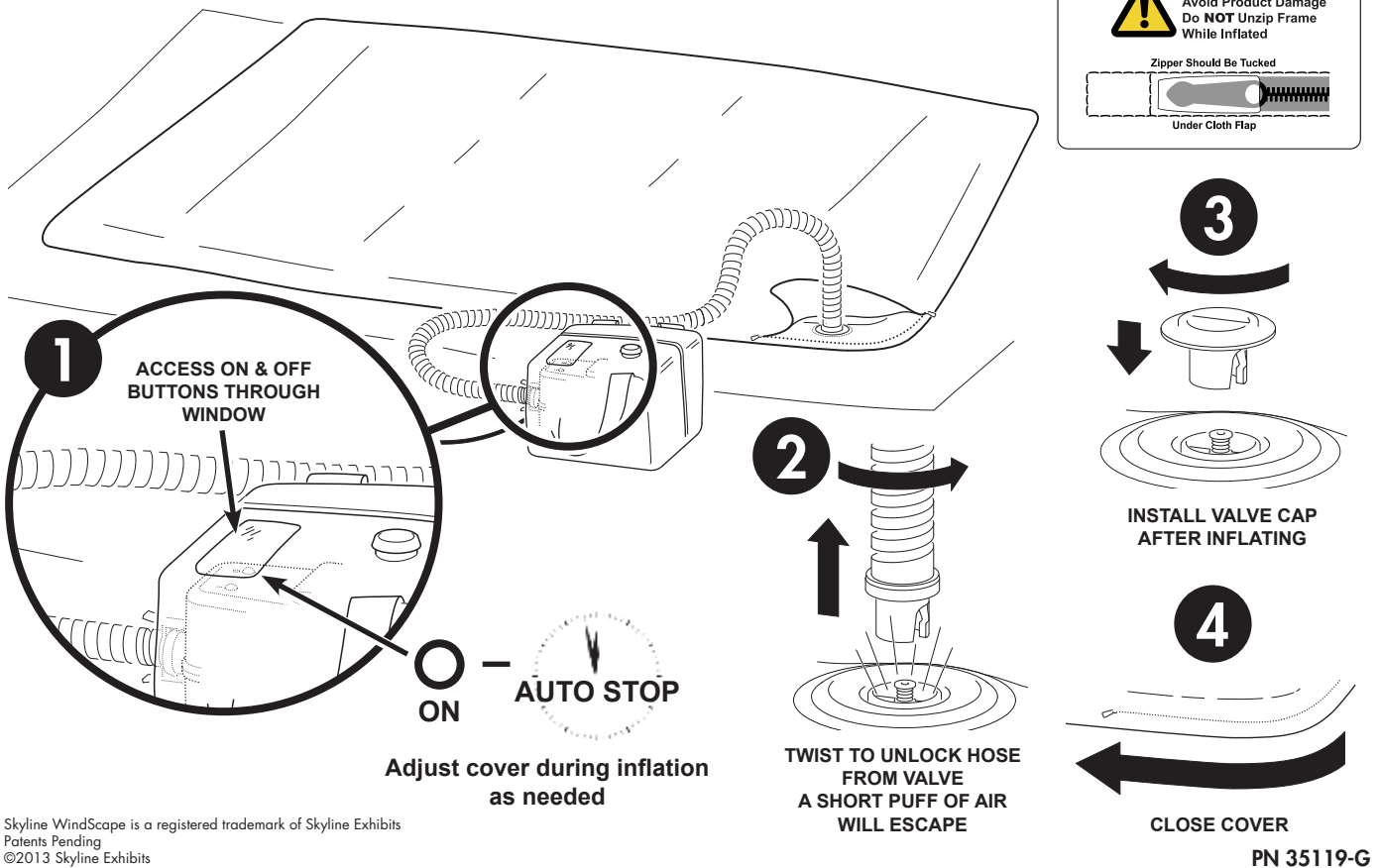
- Remove battery pack from case before charging
- **Leave battery pack on charger during storage. Battery warranty will be null and void if battery is not stored properly.**
- See charging instructions on battery pack

# Skyline WindScape® Exhibit System

## CONNECT INFLATOR TO FRAME



## INFLATE FRAME



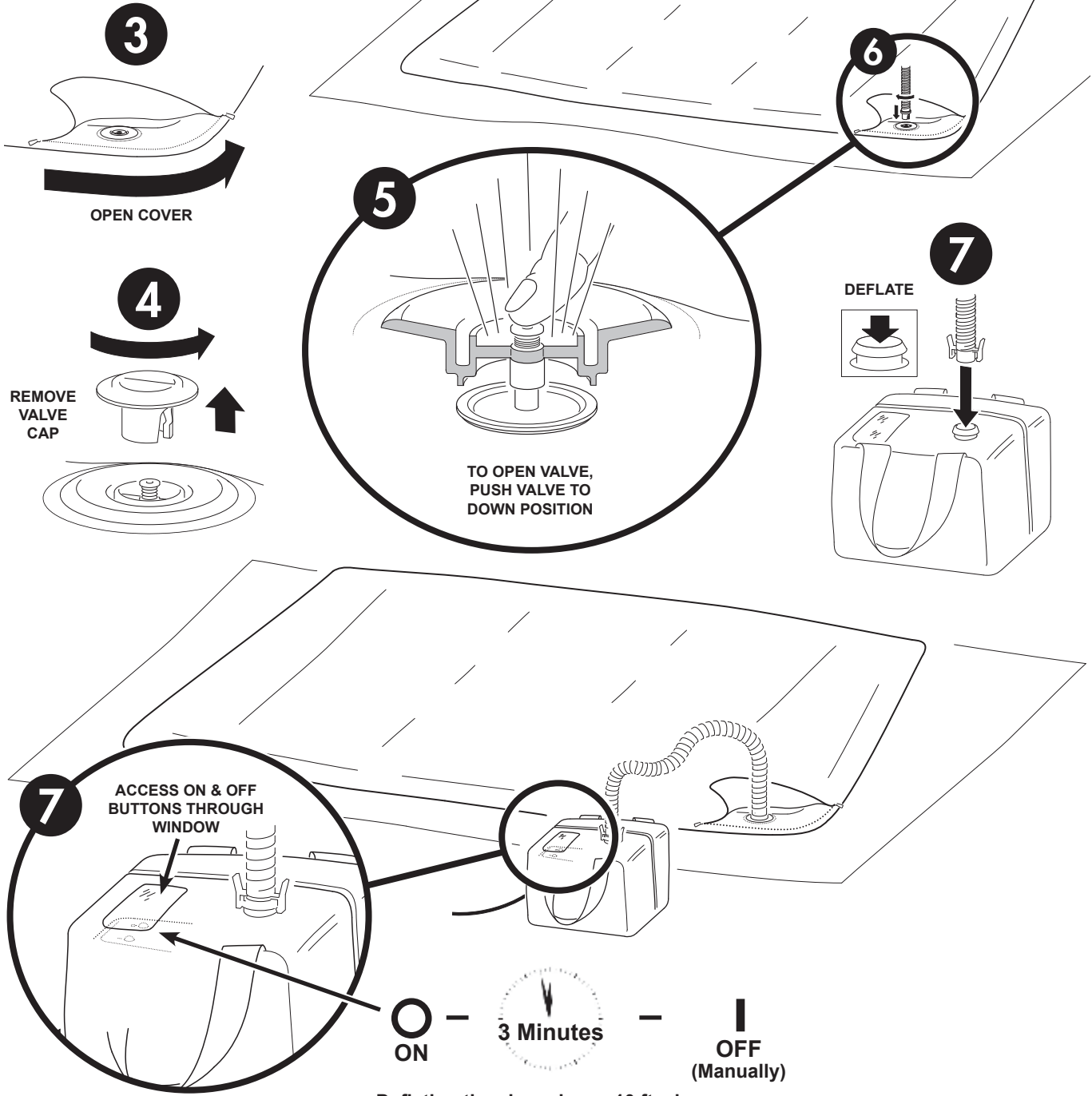
# Skyline WindScape® Exhibit System

## DEFLATE FRAME

- 1 Remove accessories and mounts.
- 2 Wear gloves to protect graphic cover. Lay display or overlay on drop cloth.

**CAUTION**  
Avoid Product Damage  
Do **NOT** Unzip Frame  
While Inflated

Zipper Should Be Tucked  
Under Cloth Flap

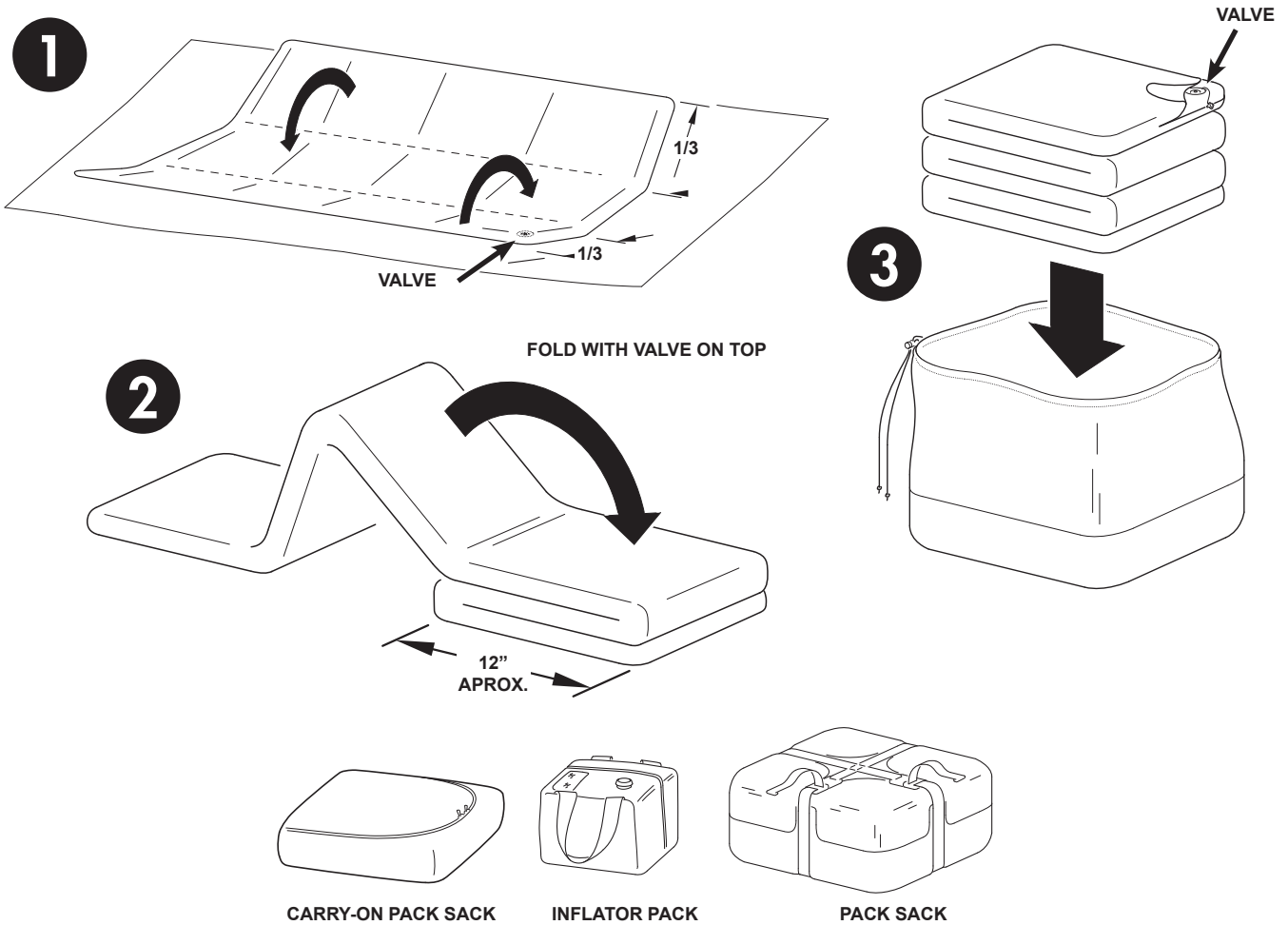


Deflation time based on a 10 ft. shape

Skyline WindScape is a registered trademark of Skyline Exhibits  
Patents Pending  
©2013 Skyline Exhibits

# Skyline WindScape® Exhibit System

## PACK

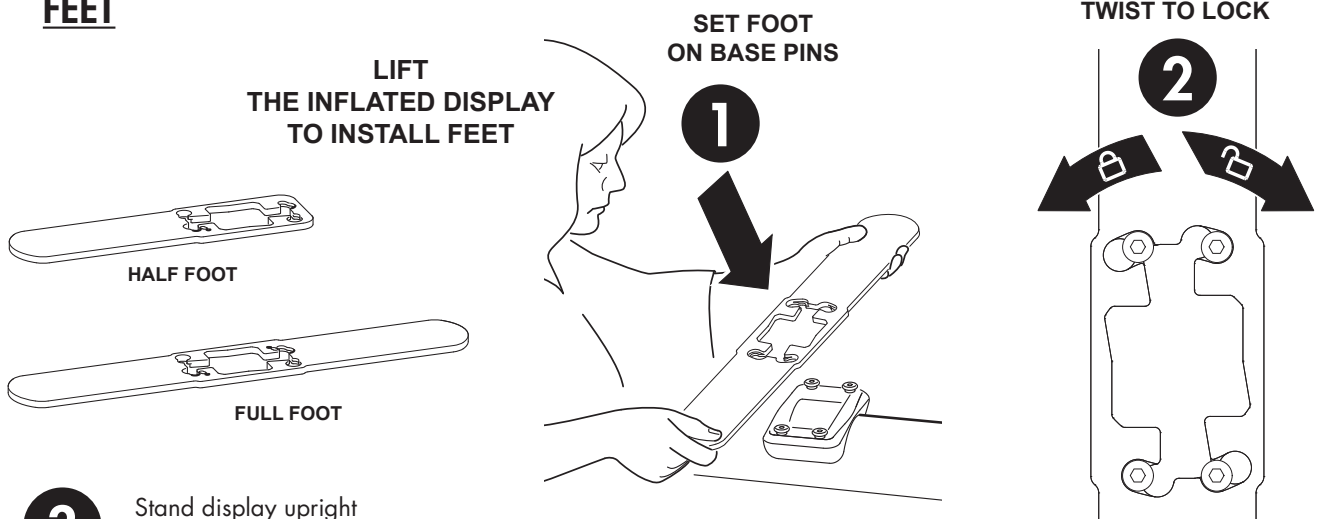


## TIPS & TRICKS

- Leave battery pack on charger during storage.
- Make sure DC battery pack is fully charged before use.
- Remove the DC battery pack from the case before charging.
- See charging instructions on battery pack
- A fully charged DC battery pack should inflate and deflate a 10 ft. shape at least 4 times.
- Disconnect DC battery pack from inflator after use and before airline transport.
- Make sure AC transformer is connected to inflator in case.
- Cover the inflator pack with packing case to reduce inflator noise during inflation or deflation.
- Adjust and straighten the graphic cover as necessary during inflation.
- Install feet and top lights before standing display upright.
- Stand display upright by lifting from behind the display. Grasp the display at the center vertical frame tube.

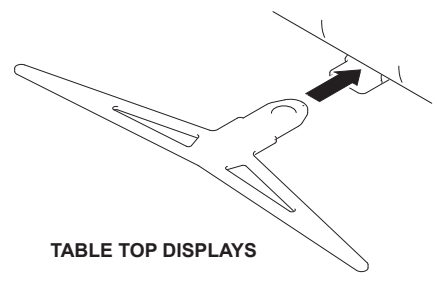
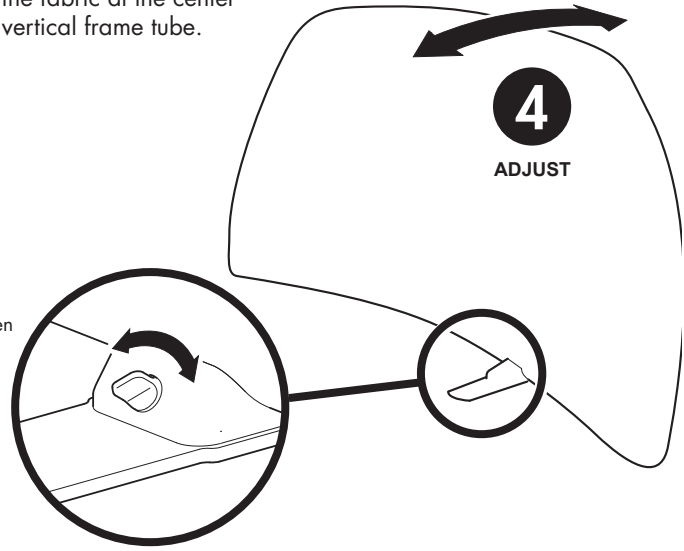
# Skyline WindScape® Exhibit System

## FEET

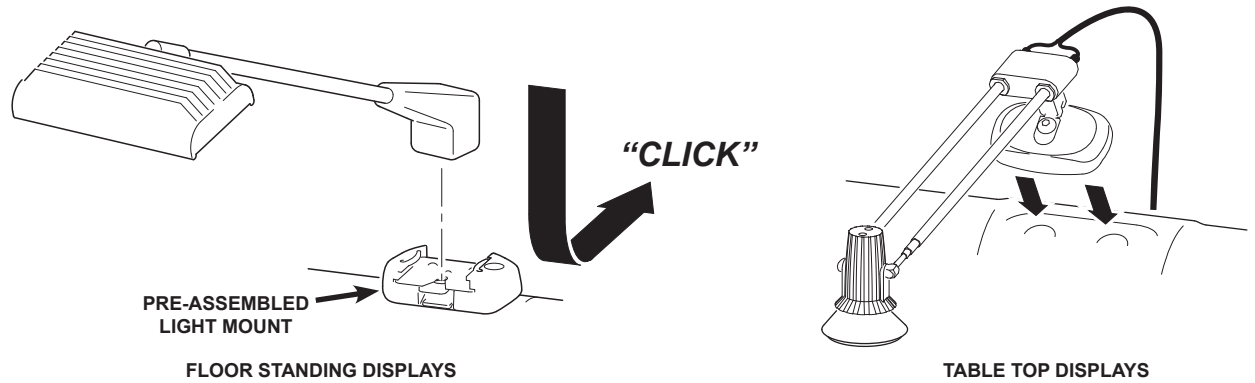


• DO NOT force the foot onto the foot mount. Align the foot so it easily locks onto the foot mount.

**3** Stand display upright by grasping the back of the display through the fabric at the center vertical frame tube.



## TOP LIGHTS

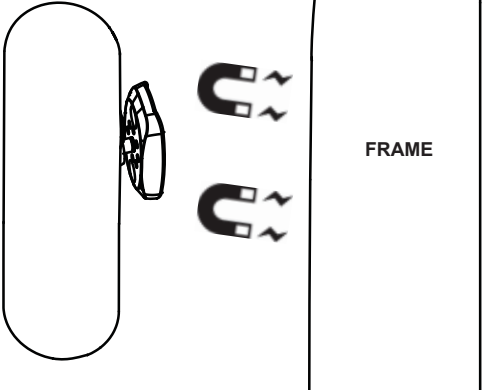


# Skyline WindScape® Exhibit System

## ACCESSORIES

### OVAL SIGN

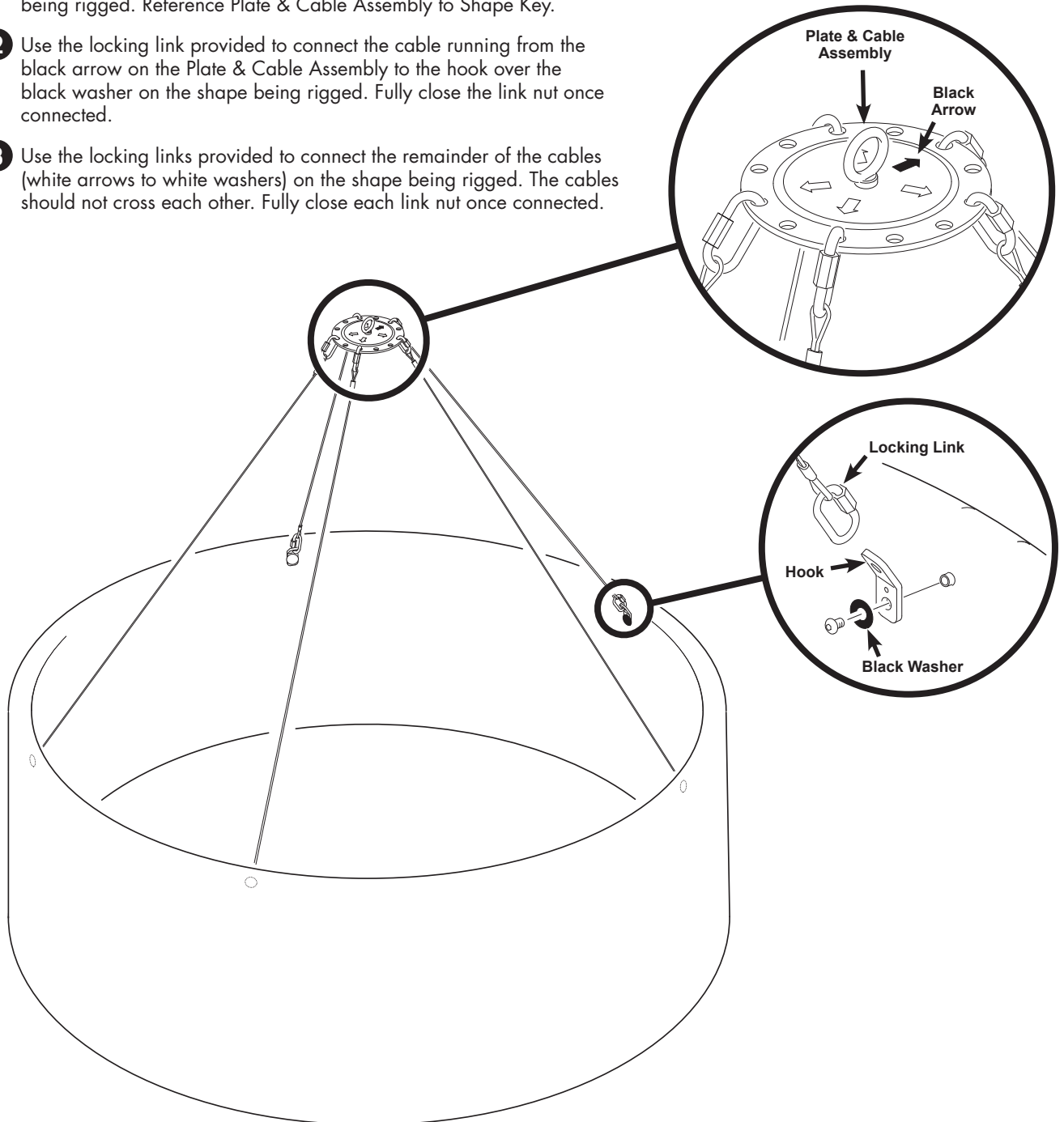
OVERLAY STANDOFF  
(pre-assembled on overlay)



# Skyline WindScape® Exhibit System

## RIGGING

- 1 Make sure the correct Plate & Cable Assembly is used for the shape being rigged. Reference Plate & Cable Assembly to Shape Key.
- 2 Use the locking link provided to connect the cable running from the black arrow on the Plate & Cable Assembly to the hook over the black washer on the shape being rigged. Fully close the link nut once connected.
- 3 Use the locking links provided to connect the remainder of the cables (white arrows to white washers) on the shape being rigged. The cables should not cross each other. Fully close each link nut once connected.



**NOTE: Some shapes require a Plate & Cable Assembly with all equal length cables. Some shapes require a Plate & Cable Assembly with cables of varied lengths. To aid correct rigging, detach the cables at the shape during disassembly. DO NOT detach cables from the Plate & Cable Assembly.**