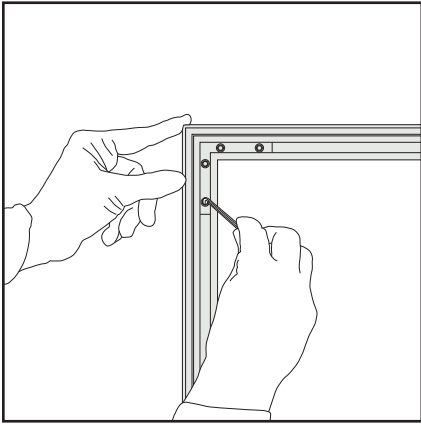
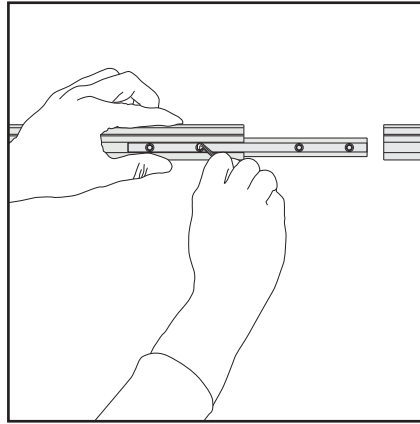


# Wall frame set-up



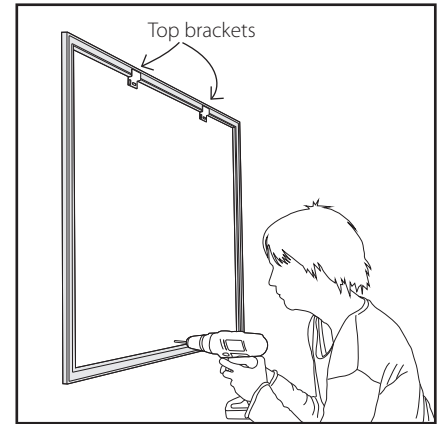
## Mount frame

Connect corners using the corner brackets. Tighten the screws using the hex key.



## Larger frames

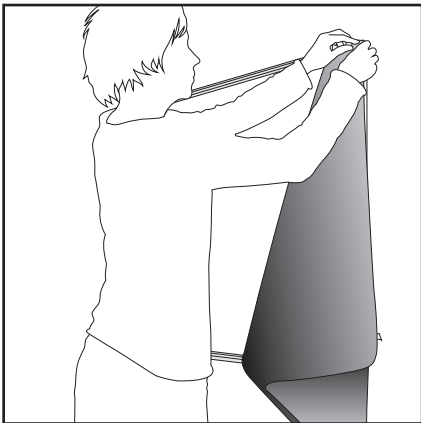
Larger frames are delivered with connectors. Connect top bottom and/or side pieces. Tighten with hex key.



## Install frame

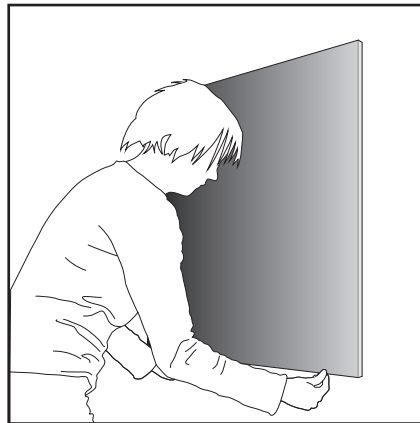
Mount the first top bracket and use a water level to mark the next one. Mount the brackets maximum 40 cm in from the corners and not more than 150 cm between 2 brackets. When mounting the other brackets (bottom and/or side) take measures to eliminate any sag.

\*Expand does not supply the screws due to different types of walls.

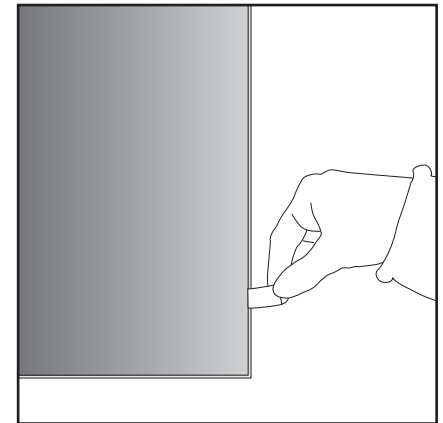


## Install graphic

Insert one corner at a time. Turn the edge of the graphic so that the silicon welt is perpendicular to the face of the graphic. Then insert the narrow side of the welt with the fabric to the outside and then into the channel.



When all corners are inserted, continue with the center of each side. Then finalize with the rest of the graphic. For best result, push down the fabric with your finger (don't slide).



## Remove graphic

To remove the graphic, just pull the tab.

expand®

expandmedia.com